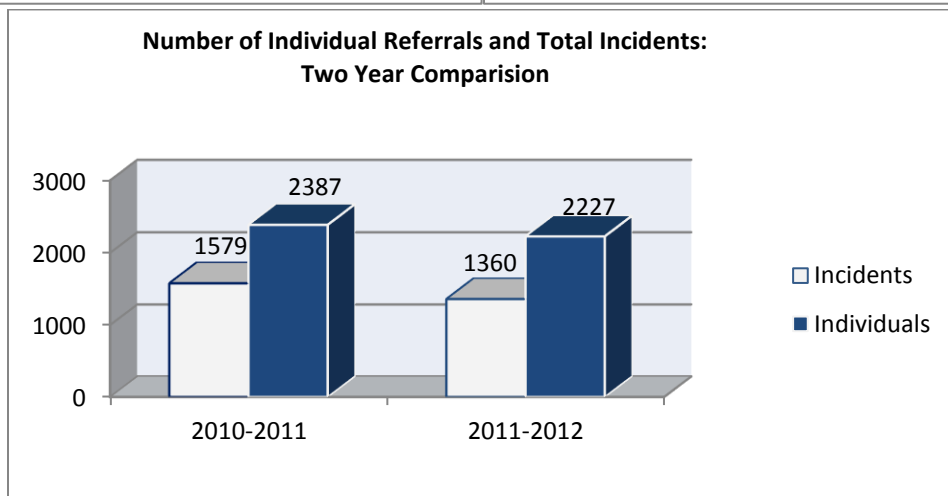
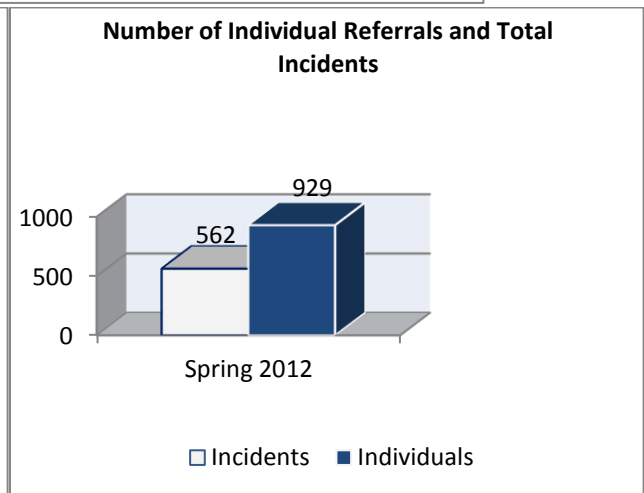
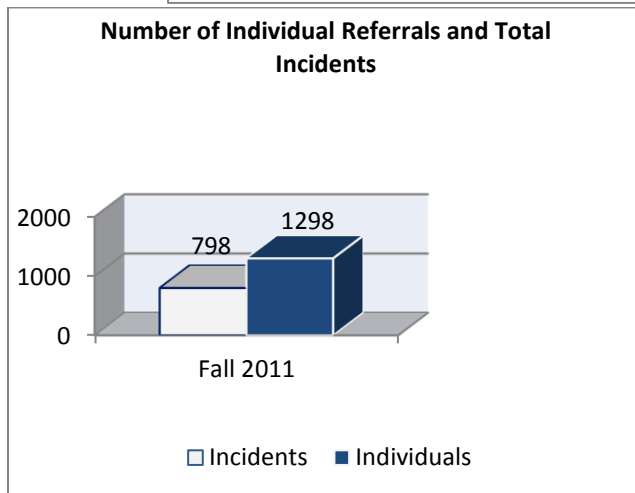
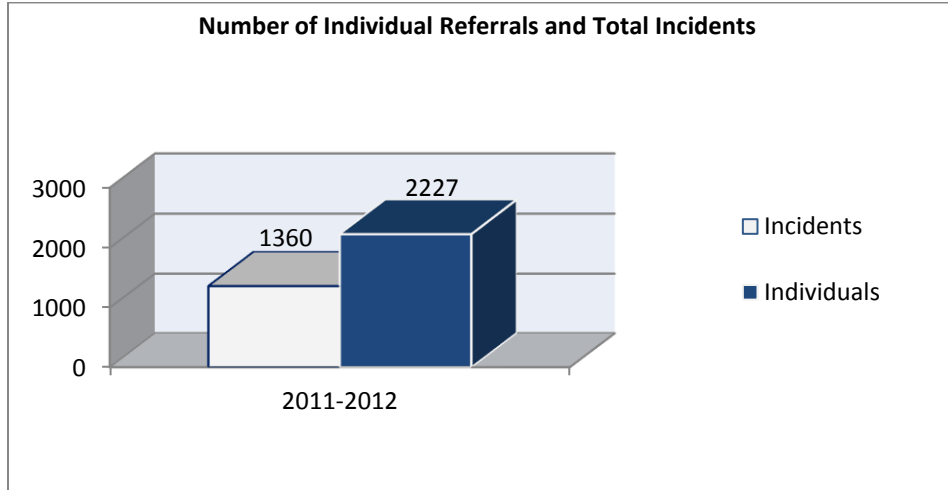
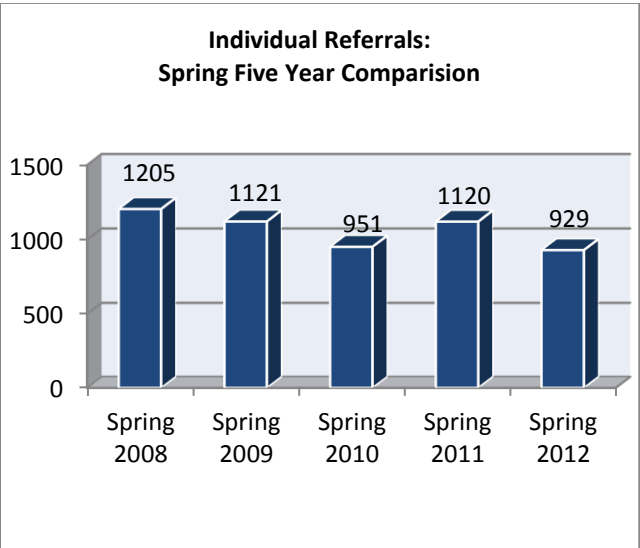
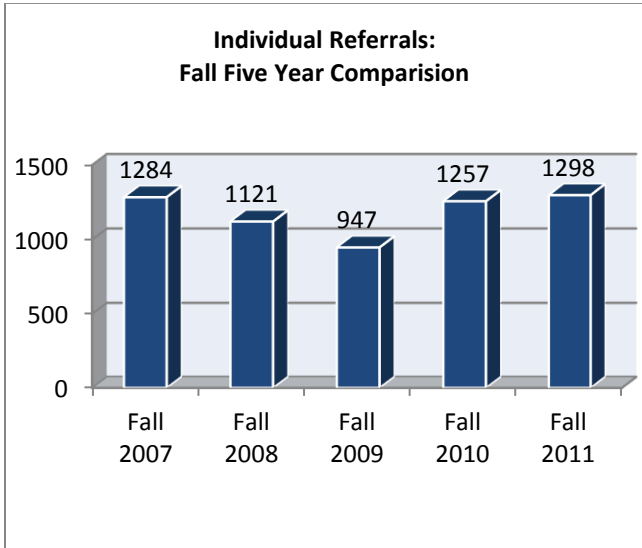
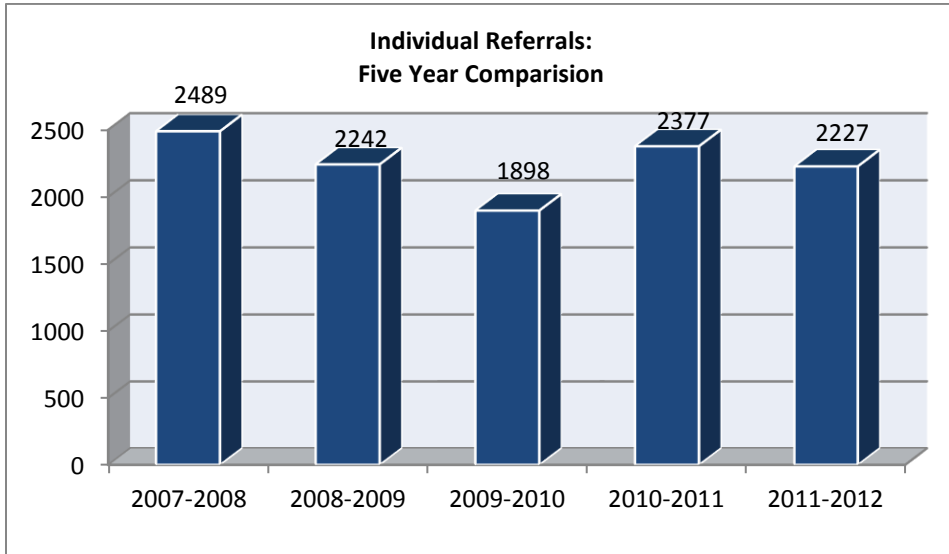
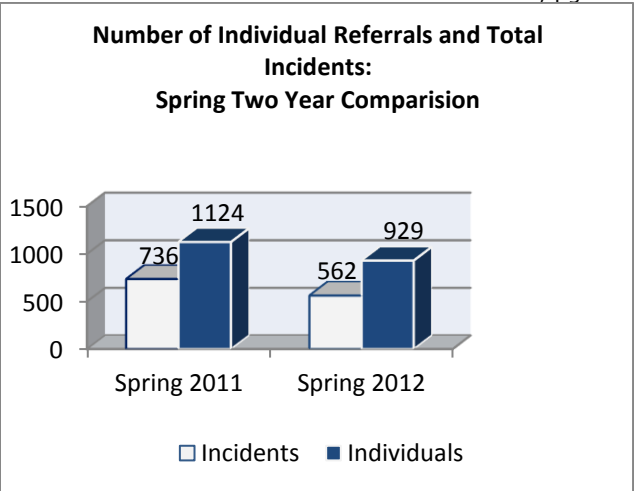
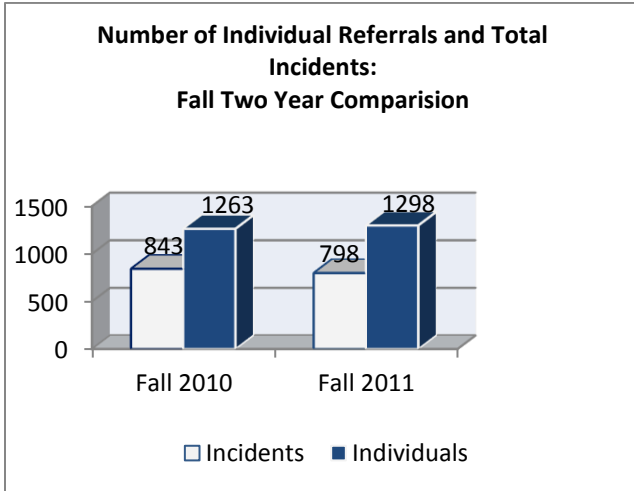


University of Connecticut
Community Standards

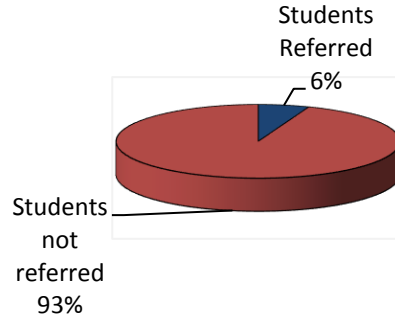
Student Conduct Process Statistics
2011-2012
(July 1, 2011 through June 30, 2012)

Part I: General Statistics

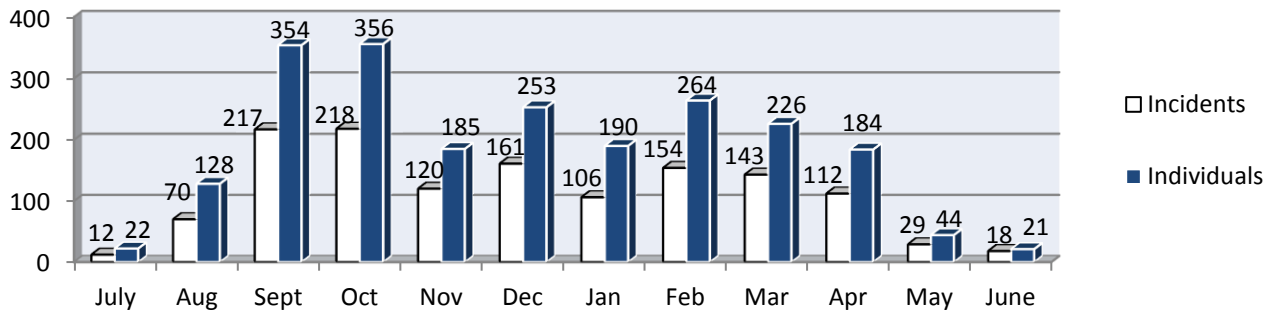




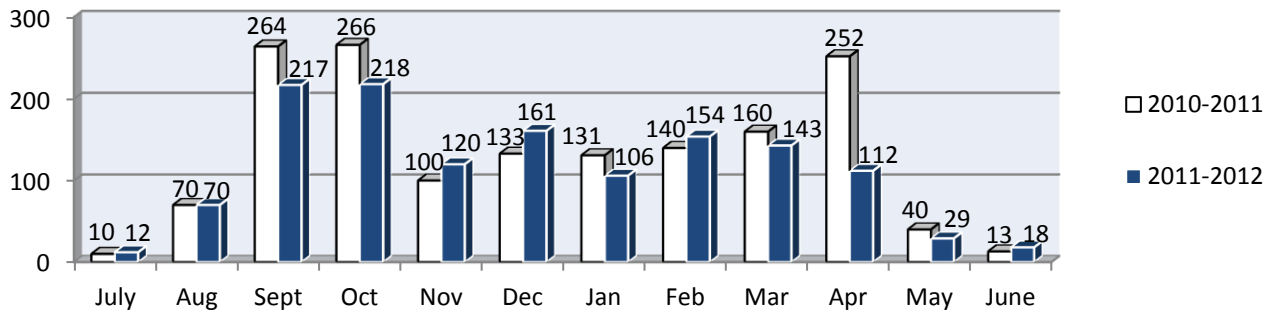
University Student Population



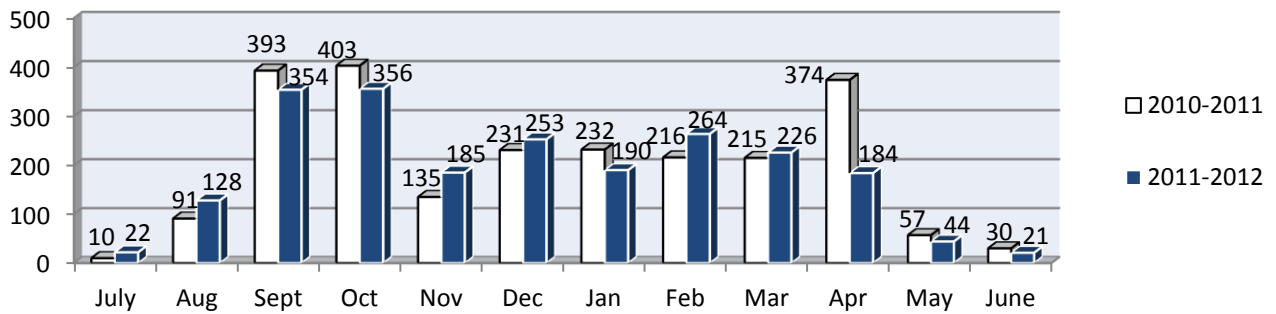
Number of Individual Referrals and Total Incidents By Month for 2011-2012



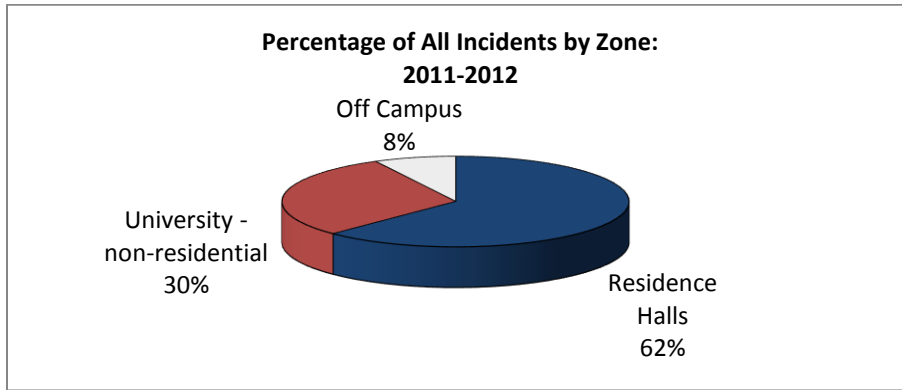
Number of Total Incidents By Month: Two Year Comparision



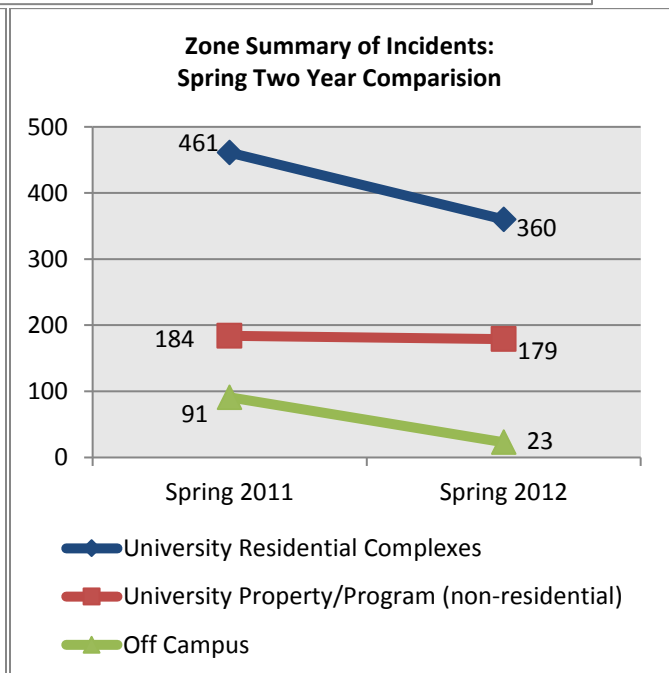
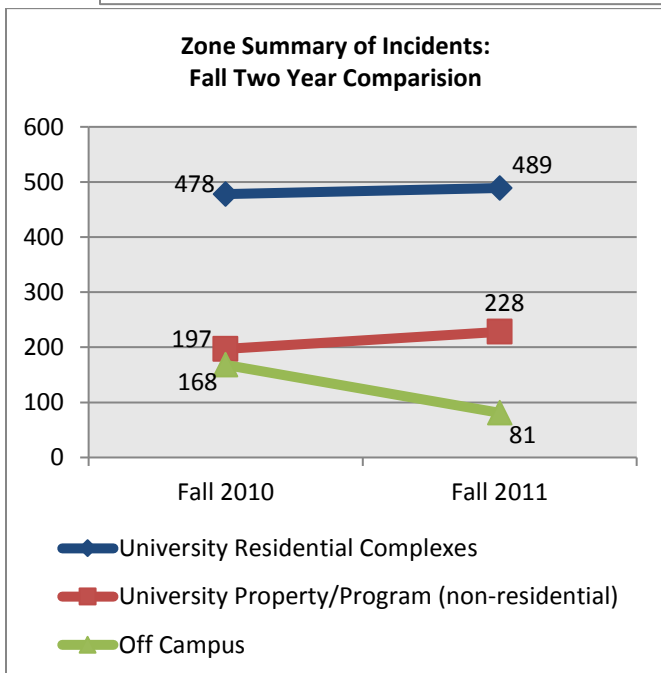
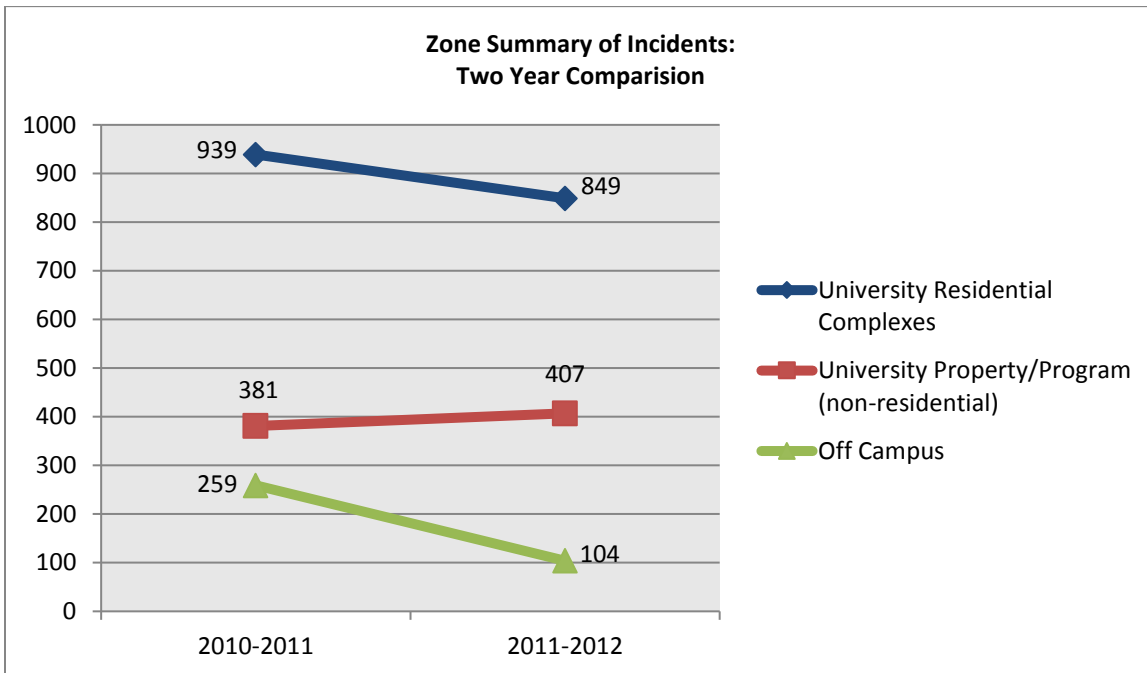
Number of Individual Referrals By Month: Two Year Comparision

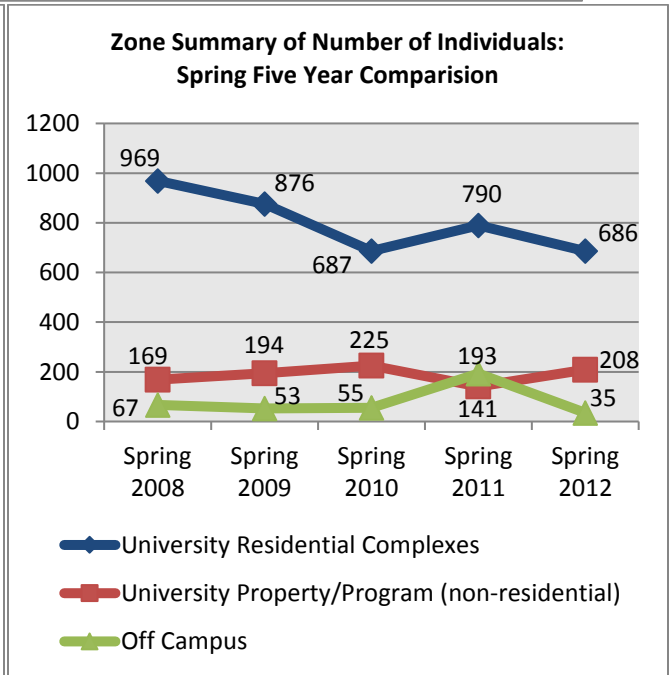
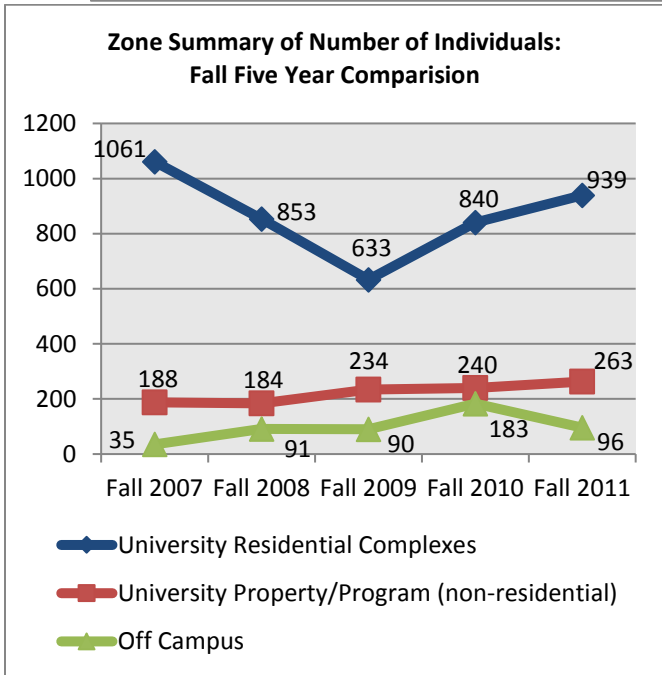
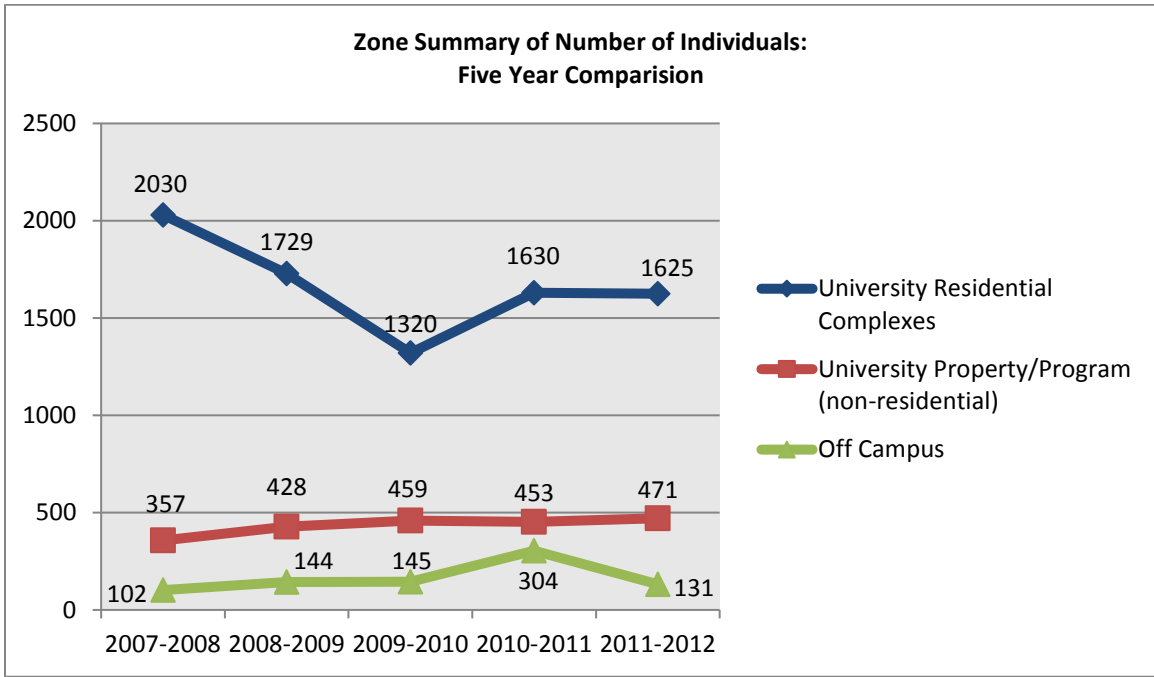


Part II: Location Statistics



Please note: The above chart illustrates the percentage of **incidents** not individuals involved in incidents. Multiple students may be involved in one incident.



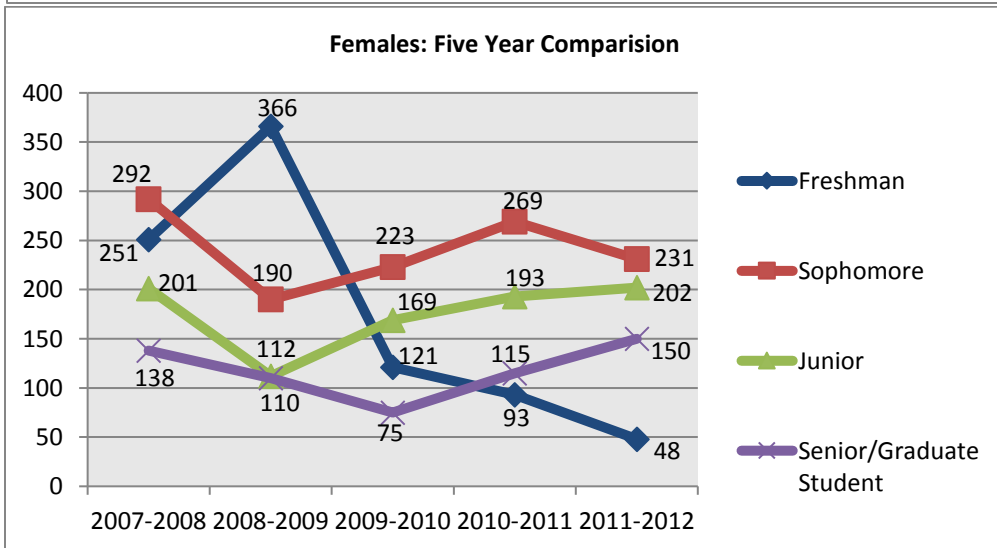
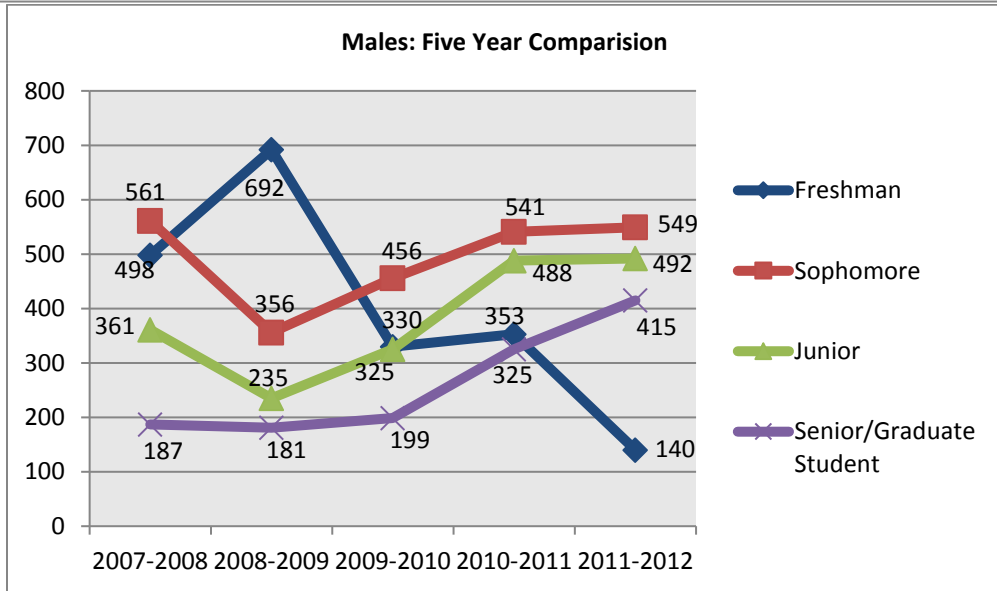
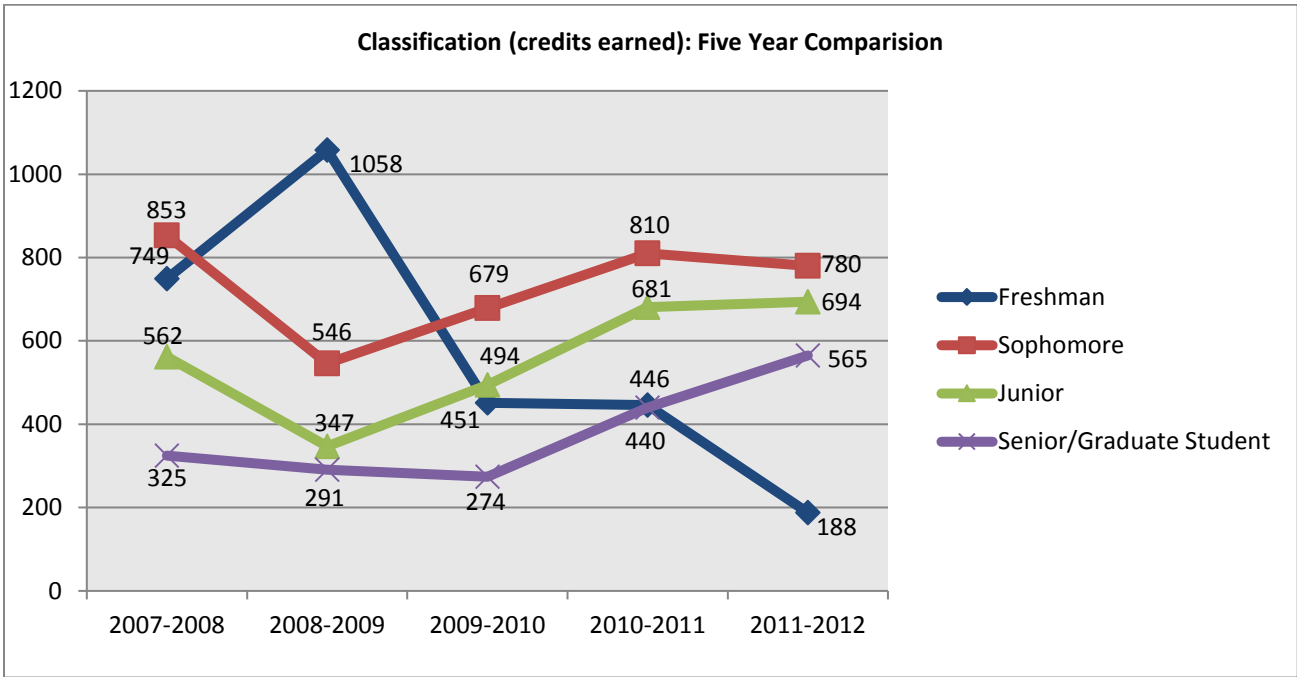


Residence and Dining Areas Summary

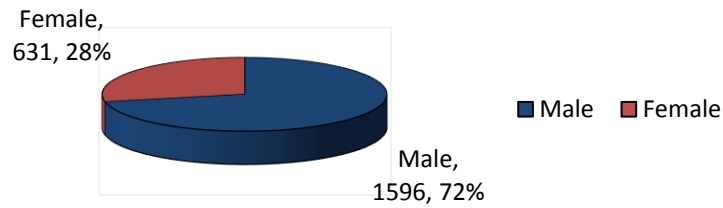
Location	2007-2008	2008-2009	2009-2010	2010-2011	2011-2012
Alumni Quad	63	51	59 (29)	95 (52)	102 (53)
Buckley Hall	118	44	106 (71)	90 (56)	97 (39)
Busby Suites	106	113	70 (40)	55 (33)	58 (37)
Charter Oak Apts.	95	51	68 (38)	100 (52)	16 (12)
Connecticut Commons	5	8	26 (20)	11 (9)	17 (12)
East Campus	25	31	40 (28)	45 (29)	74 (32)
Garrigus Suites	96	42	38 (19)	42 (28)	65 (33)
Hilltop Apts.	239	98	42 (27)	79 (55)	21 (13)
Hilltop: Hale/Ellsworth	61	80	69 (48)	91 (66)	112 (70)
Husky Village	47	8	24 (17)	9 (6)	4 (3)
Mansfield Apts.	43	69	16 (9)	15 (9)	19 (15)
McMahon Hall	65	65	36 (21)	67 (40)	150 (73)
North Campus	303	245	217 (104)	419 (212)	405 (197)
Northwest	372	534	278 (132)	159 (96)	107 (62)
Northwood Apts.	0	3	1 (1)	2 (1)	7 (4)
Shippee Hall	91	78	33 (23)	61 (33)	105 (48)
South Campus	39	24	21 (14)	61 (32)	141 (65)
Towers	167	137	107 (69)	163 (93)	75 (48)
West Campus	95	48	69 (35)	64 (36)	50 (33)
Total	2030	1729	1320 (746)	1630 (939)	1625 (849)

Please note: The number in parentheses above indicates the number of incidents.

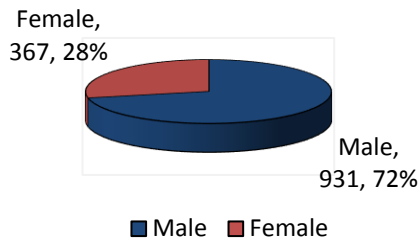
Part III: Individual Statistics



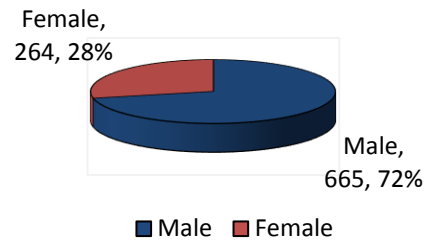
Gender Percentage: 2011-2012



Gender Percentage: Fall 2011



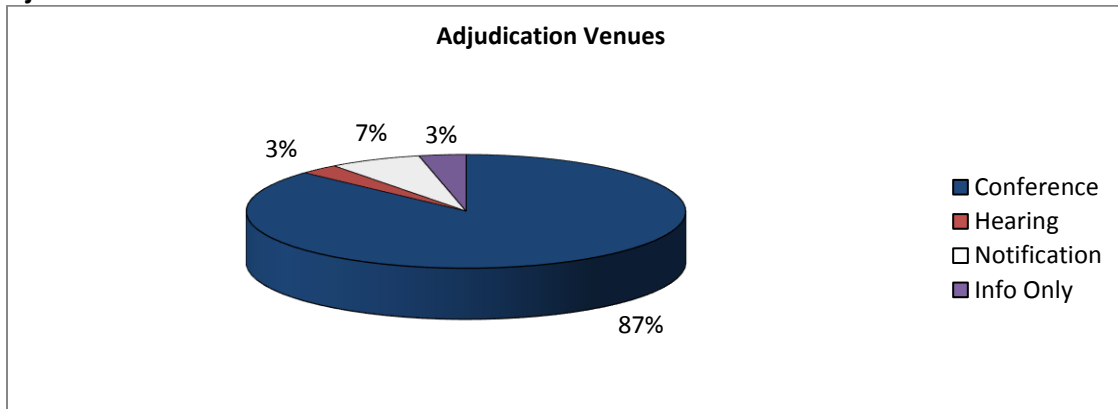
Gender Percentage: Spring 2012



Repeat Respondents – 2011 - 2012

325 students (18%) had more than one behavioral referral in 2011-2012. 382 students (21%) from 2011-2012 had a previous referral prior to 2011-2012.

Part IV: Adjudication Statistics



Resolution Types

Type	2007-2008	2008-2009	2009-2010	2010-2011	2011-2012
Administrative Conference/Informal Resolution	2088	1865	1546	2020	1992
Administrative Hearing	283	144	106	90	61
Written Notification	59	95	64	154	51
Academic Misconduct Notification	49	67	117	103	101
Academic Misconduct Hearing	8	11	12	5	5
No follow-up needed	2	69	79	12	17
Total	2489	2251	1924	2384	2227

Violations

Students may be charged with multiple violations or not at all depending on the circumstances. For information regarding specific housing contract violations, please contact Residence Education.

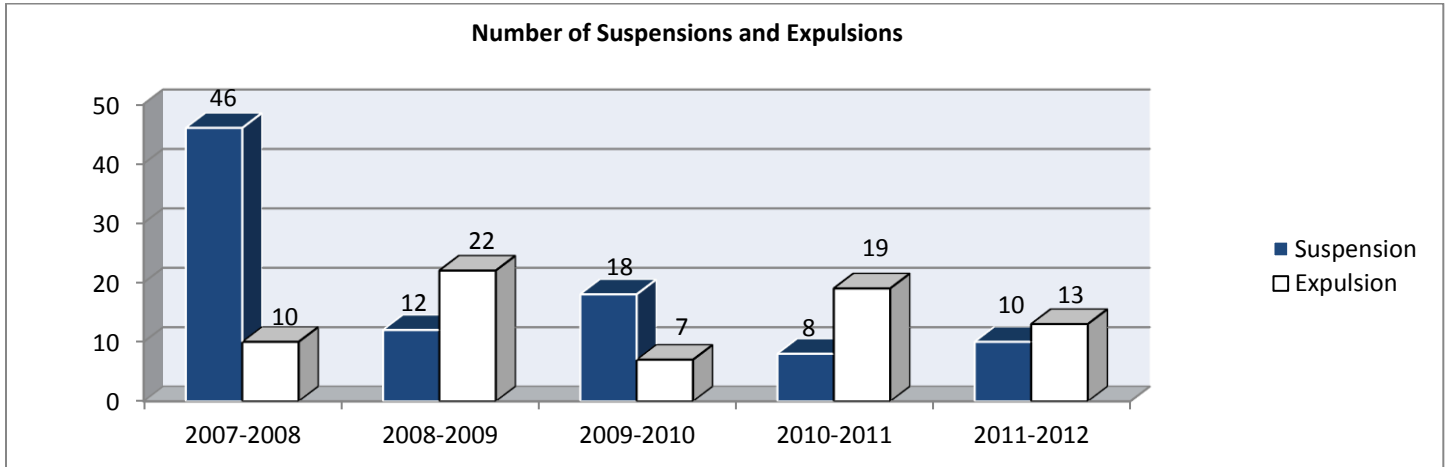
Violation	Charged	In Violation	% in Violation
Academic Integrity	106	102	96%
Disruptive behavior	251	198	79%
Harming Behavior	43	29	67%
Sexual Misconduct	4	3	75%
Endangering Behavior	185	170	92%
Hazing	0	0	NA
Violation of the <i>Policy on Alcohol and Other Drugs</i> - alcohol	729	613	84%
Violation of the <i>Policy on Alcohol and Other Drugs</i> - drugs	200	146	73%
Dangerous Items	5	4	80%
Uncooperative Behavior	147	71	48%
Fire Safety	14	13	93%
Assisting the Commission of a Violation	9	6	67%
Violation of Published University Policy	40	30	75%
Theft	80	70	88%
Unauthorized Entry/Presence	16	11	69%
Unauthorized Possession, Duplication, or Misuse of University Property	14	14	100%
Damage or Misuse of Property	62	59	95%
Violation of federal, state, or local law	3	1	33%
Abuse of the Student Conduct System	3	2	67%
Total	1911	1542	81%

Part V: Sanction Statistics

Sanctions

Sanctions Assigned	Students
University Expulsion	13
University Suspension	10
University Probation	218
Warning	1092
UConn Compass (engagement component)	335
UConn Compass (suspension component)	10
Wellness and Prevention: Alcohol	224
Wellness and Prevention: Drugs	99
Banned from University Building(s)	20

Educational Project	338
Living Your Values Workshop	28
Loss of Privileges	73
Meeting with specific University staff member	88
Removal from Housing	24
Restitution	44
Total	2616



Suspensions – 2011-2012

Nine male students and one female student were suspended for the following types of circumstances (five of the students had student conduct history):

- Assault (two students)
- Disruptive behavior while on University Probation (two students)
- Driving under the influence and causing harm and damage
- Drug distribution (two students)
- Falsely reporting a crime in order to gain an academic advantage
- Possession of drugs while on University Probation
- Theft

Expulsions – 2011 - 2012

Ten male students and three female students were expelled for the following types of circumstances (Seven of the students had student conduct history):

- Assault (two students)
- Disruptive and threatening behavior towards Mansfield community members (two students)
- Drug distribution (six students)
- Possession of drugs and interfering with a police investigation
- Sexual misconduct (two students)

University Probation

148 students appeared before the Probation Review Committee in 2011-2012. 120 students (81%) were successful and their University Probations were lifted. 28 students were denied.